



# *Nera WorldPro 1000/1010*

## *Setting up a DUN*

*(Dial Up Network)*

SETUP.....	3
CHECKING DEFAULT SETTINGS.....	7
CONNECTING TO SERVER.....	10

*When using the BGAN LaunchPad  
making a dial up is not necessary.*



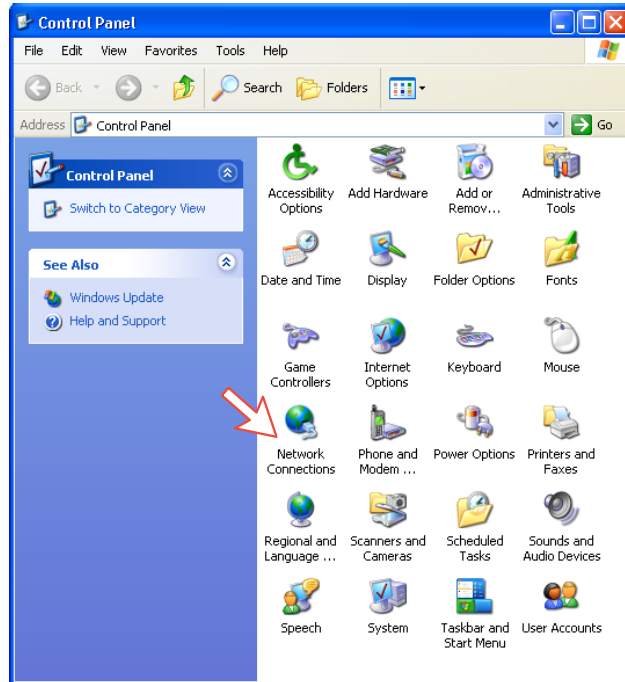
**1** Open the **Control Panel** on the PC and double-click the **Network Connections** icon.

*Note! Two Nera USB drivers must be installed prior to connecting the PC to Nera WorldPro.*

*The drivers are installed using the Nera USB Wizard.*

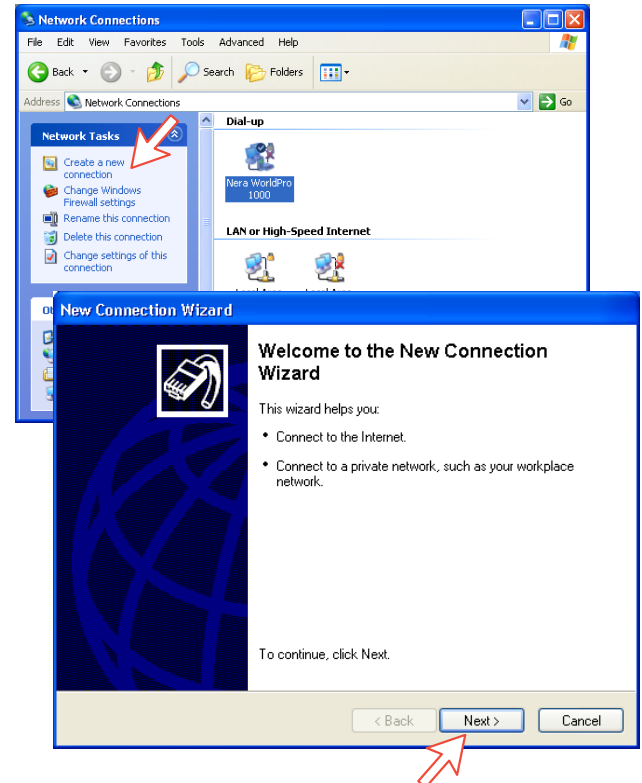
*Insert the Nera WorldPro CD and click:*

*Software Installation > Installing Nera USB Drivers.*

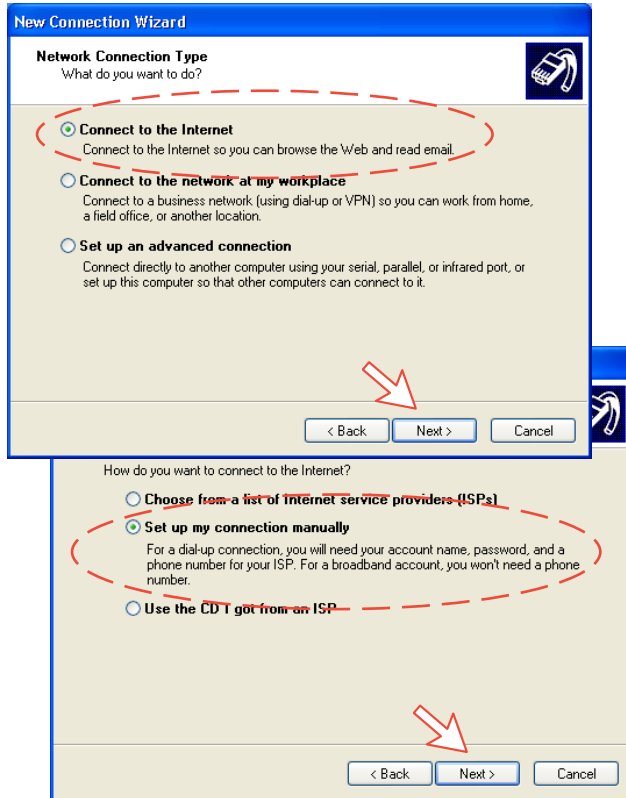


**2** Click **Create a new connection** to open the **New Connection Wizard**.

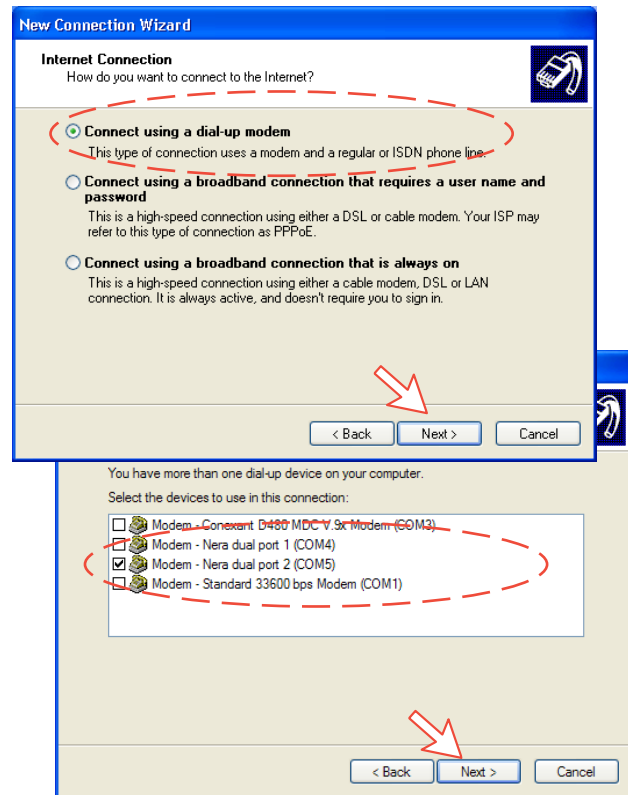
*Click Next.*



**3** Check **Connect to the Internet**. *Click Next.*  
 Check Set up my connection manually.  
*Click Next.*



**4** Check **Connect using a dial-up modem**.  
*Click Next.*  
 Choose Modem - Nera dual Port 2. *Click Next.*



**5** Enter the name for the connection e.g. **Nera WorldPro**.  
Click **Next**.

**New Connection Wizard**

**Connection Name**  
What is the name of the service that provides your Internet connection?

Type the name of your ISP in the following box.

ISP Name  
Nera WorldPro 1000

The name you type here will be the name of the connection you are creating.

< Back   Next >   Cancel

---

Type the phone number below.

Phone number:  
\*98#

You might need to include a "1" or the area code, or both. If you are not sure you need the extra numbers, dial the phone number on your telephone. If you hear a modem sound, the number dialed is correct.

< Back   Next >   Cancel

**6** To set up a data connection:  
\*98# sets up a background data connection.  
\*98\*2# sets up 32 kbps streaming  
\*98\*3# sets up 64 kbps streaming  
Click **Next**.

Check **Anyone's use**, and click **Next**.

**New Connection Wizard**

**Connection Availability**  
You can make the new connection available to any user or only to yourself.

A connection that is created for your use only is saved in your user account and is not available unless you are logged on.

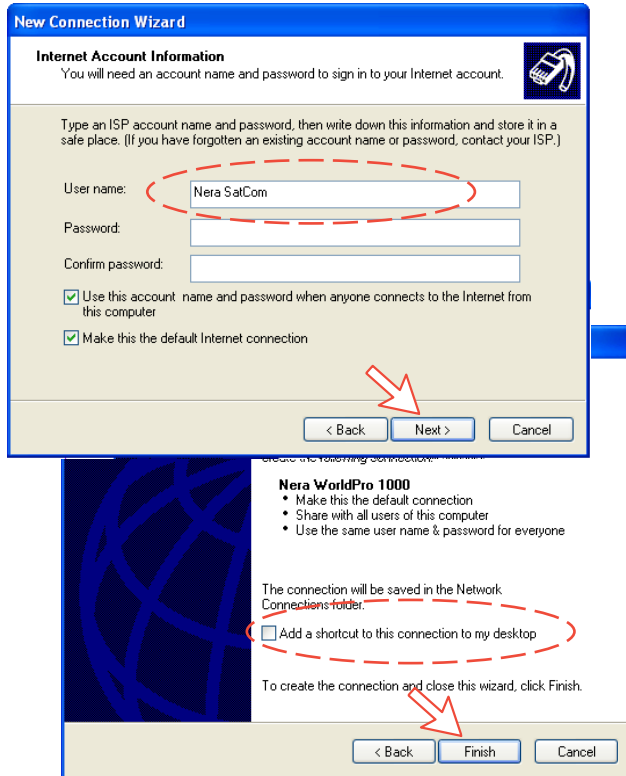
Create this connection for:

Anyone's use  
 My use only

< Back   Next >   Cancel

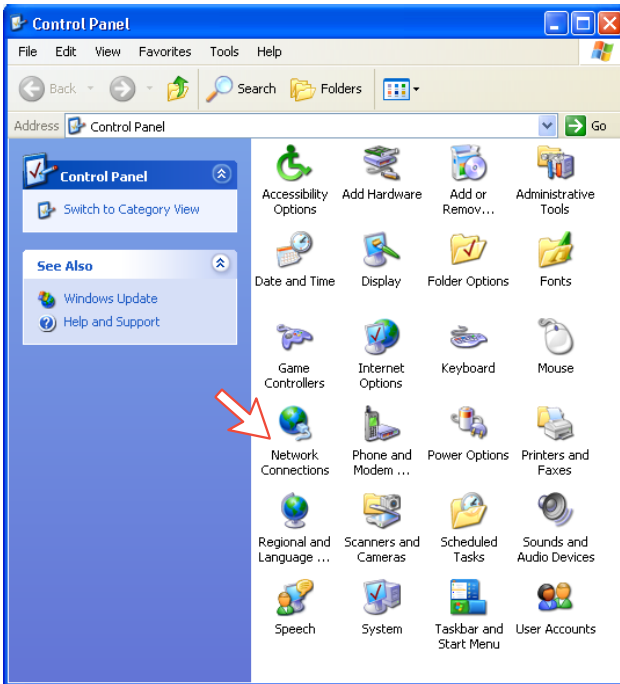
**7** Enter name and password provided by your Distribution Partner for the connection. Not always necessary.

Complete the **New Connection**, *Click Finish*.

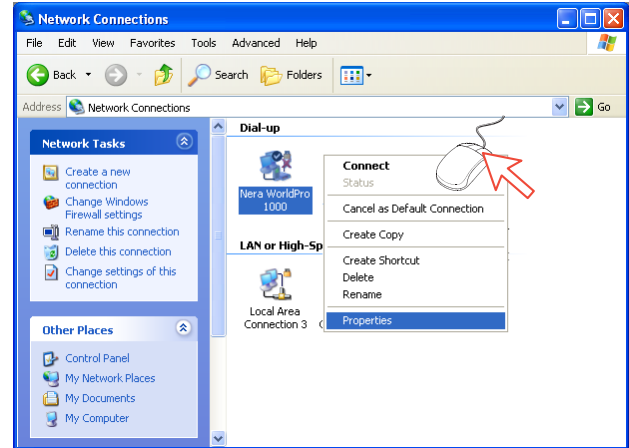




1 Double-click **Network Connections** in the **Control Panel**.



2 Right-click the **Nera WorldPro** dial-up connection and click **Properties**.



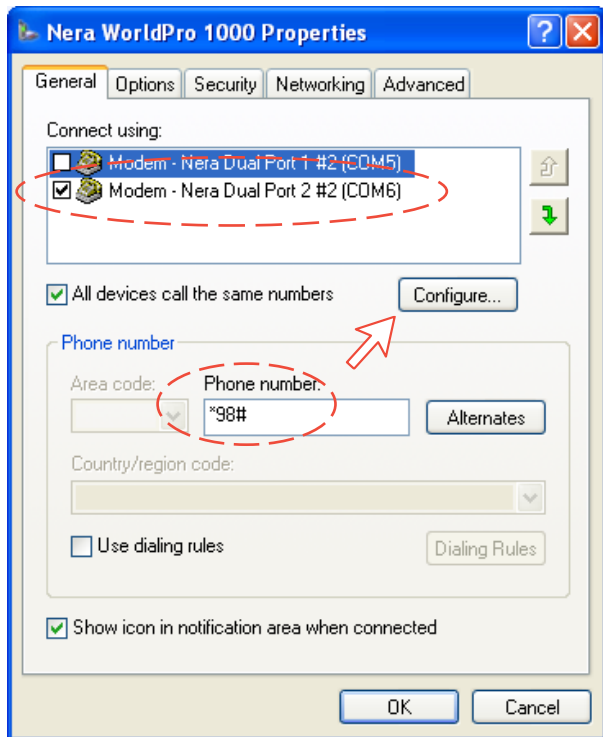


**3** Confirm settings in the **Mobile Data Service via USB Properties** window:

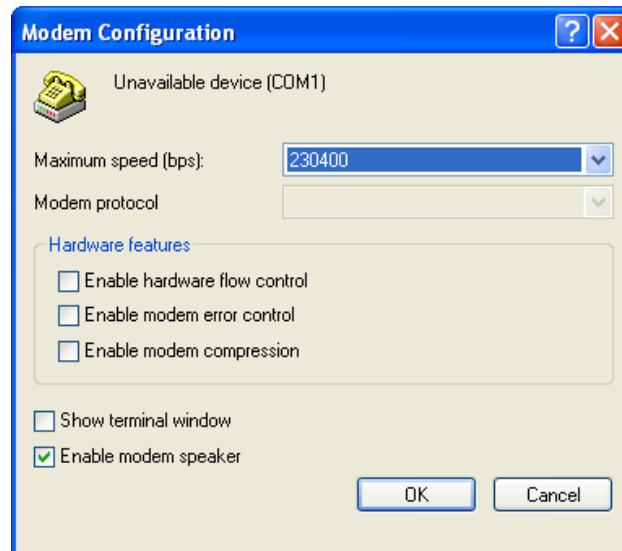
"Modem - Nera Dual Port".

Phone number: \*98#

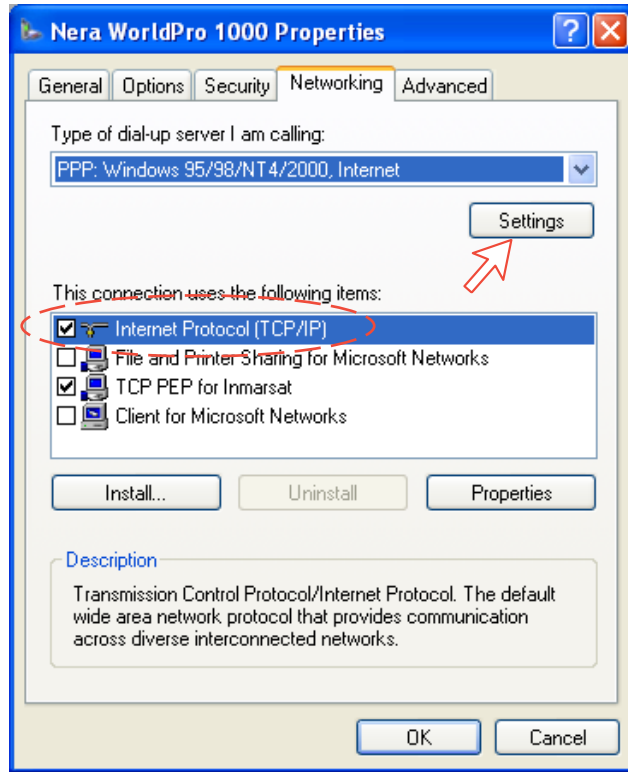
Click **Configure**.



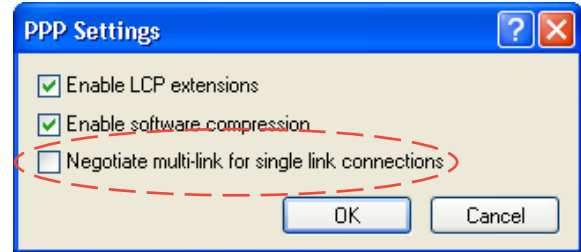
**4** In the **Modem Configuration** window, the **Maximum speed (bps)** is typically set to 230400 as default. It is recommended to select a higher speed, e.g. **460800 bps**.



5 In the **Nera WorldPro Properties** window, click **Networking** and check that **Internet Protocol (TCP/IP)** is selected. Click **Settings**.



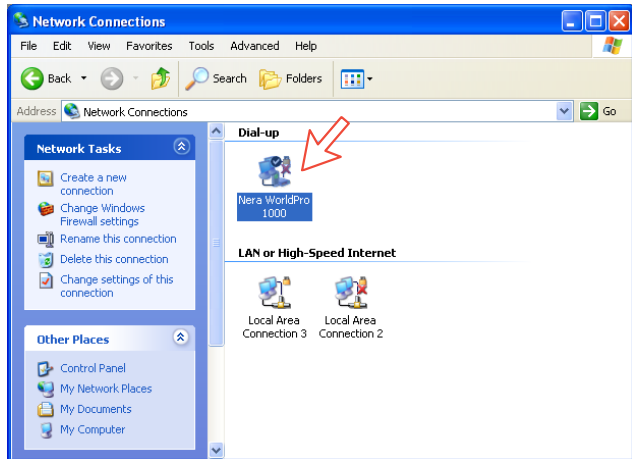
6 In the PPP Settings window, **Negotiate multi-link for single link connections** should be unchecked.





## Initiating a data call

Open the **Control Panel** on the PC and double-click the **Nera WorldPro** icon in the **Network Connections** window (i.e. the preset dial-up connection). If provided for the specific server connection, enter the **User name** and **Password**.



Dialing \*98# sets up a background data connection.

\*98\*2# sets up 32 kbps streaming

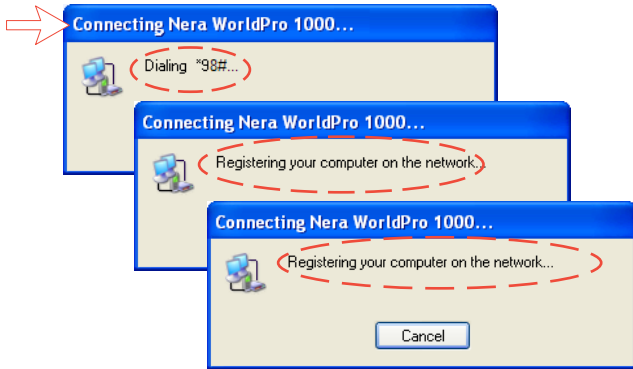
\*98\*3# sets up 64 kbps streaming

Click **Next**. See **Connection in progress** on next page.



**Connection in progress**

Displayed on the PC screen:



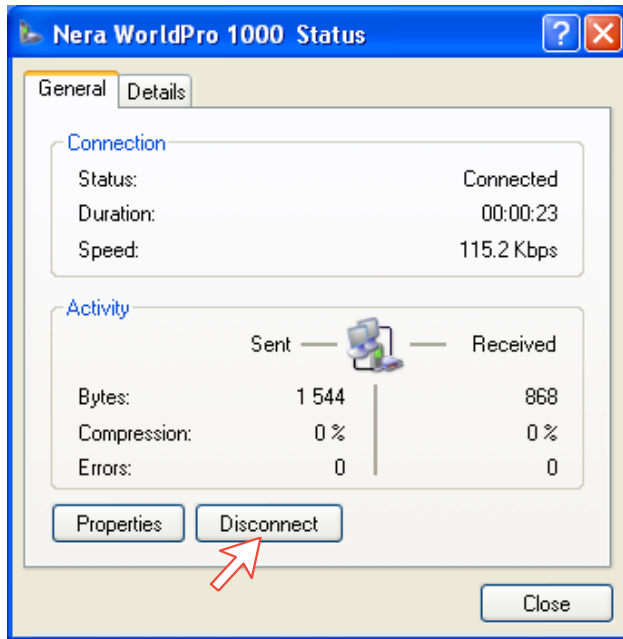
**When connected:**

➔ *Open the browser/program to be used on the connection.*



### Connection status

Appears when right-clicking the **Nera WorldPro** dial-up icon or clicking the PC icons in the lower right corner of the screen.



*NB!*

Click **Disconnect** when shutting down the call.  
It is not enough to close the browser alone.