



# *Nera WorldPro 1000/1010*

## *Connecting to PC via USB*

INTRODUCTION .....	3
CONNECTING UP .....	4
INSTALLING USB DRIVERS .....	5
TROUBLESHOOTING .....	10





Nera WorldPro1000/1010 supports **Packet Switched** data, voice and SMS. Packet switched data can be set up using the LaunchPad PC program or setting up a DUN.

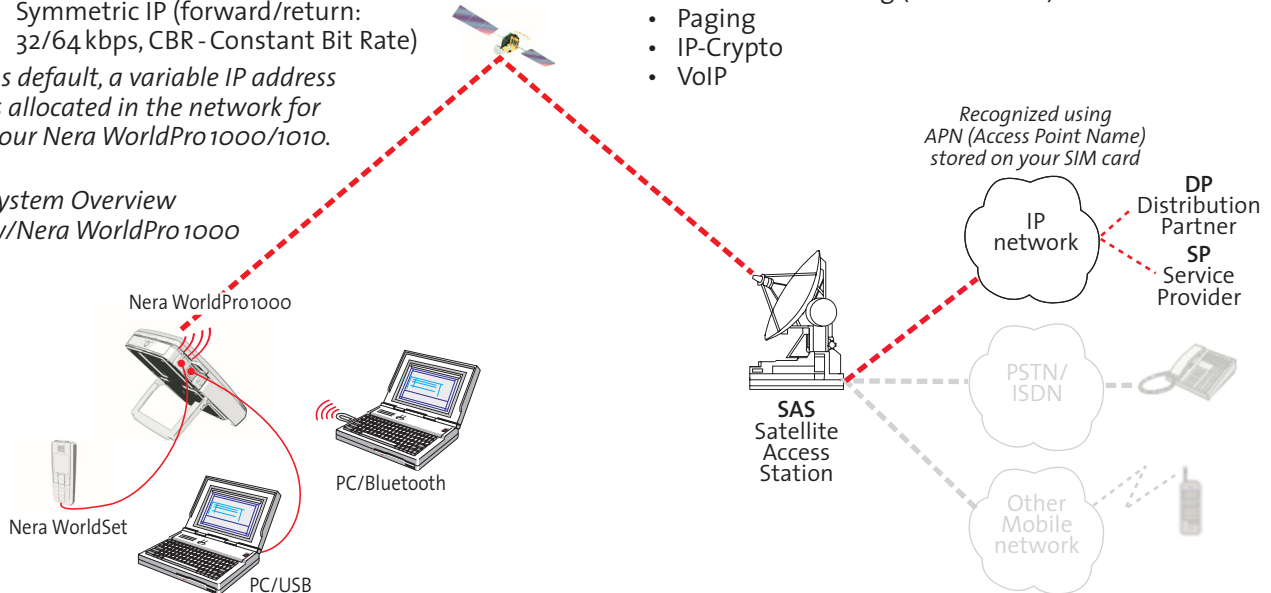
The **Packet Switched service** complies with the communication protocol defined by the Inmarsat BGAN system.

#### **Packet Switched data rates:**

- Standard IP bit rates up to 384/240 kbps on shared channels (384 downstream/240 upstream, VBR - Variable Bit Rate)
- Symmetric IP (forward/return: 32/64 kbps, CBR - Constant Bit Rate)

*As default, a variable IP address is allocated in the network for your Nera WorldPro1000/1010.*

#### **System Overview w/Nera WorldPro1000**

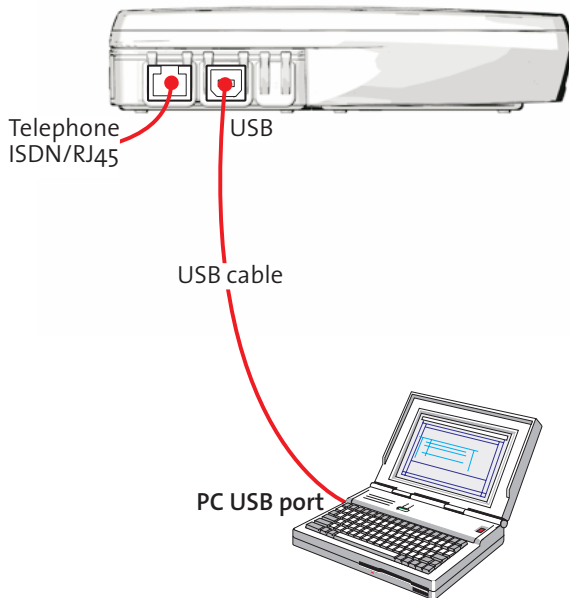


#### *Typical IP services supported include:*

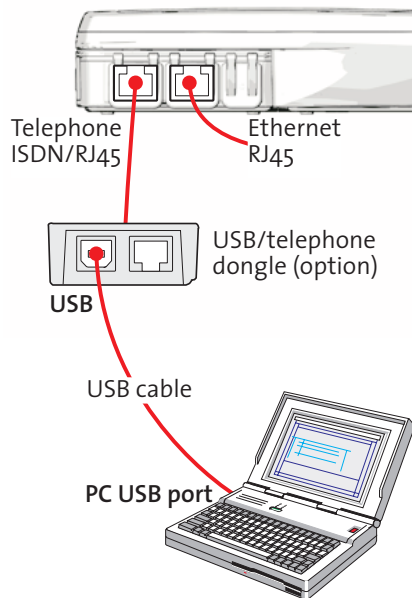
- E-mail and messaging (including GPRS/UMTS based SMS)
- Data file transfer
- Video Conferencing
- Internet access (including web browsing)
- Intranet access (VPN)
- IP telephony (including conferencing and messaging)
- IP Facsimile
- IP Multi-casting/broadcasting;
- Internet streaming (audio/video)
- Paging
- IP-Crypto
- VoIP



### Nera WorldPro1000



### Nera WorldPro1010



#### Note!

For connection via USB, **Nera USB drivers** must be installed, see **First time installation** on next page.  
For connection via **Bluetooth**, see the Application Guide **Nera WorldPro 1010 - Connecting to PC via Bluetooth**.

#### Apple Mac OS, see **INSTALLING USB DRIVERS ON APPLE MAC**

No driver installation is required. Just plug the USB cable into the USB connector on the Mac pc and choose USB modem.  
For Remote Access, use "Metric Ricochet wireless".



## First time installation

Note! Installing Nera USB Drivers is only necessary to do once.

Make sure to use the same PC USB port the next time you connect to Nera WorldPro 1000/1010.

Procedure:

(Windows XP is used as an example)

**Ensure that the BGAN LaunchPad is closed.**

**1** Insert the CD enclosed with the manual.

**2** Two Nera USB drivers must be installed prior to connecting the PC to Nera WorldPro 1000/1010.

The drivers are installed using the Nera USB Wizard. Insert the Nera WorldPro 1000/1010 CD and click:

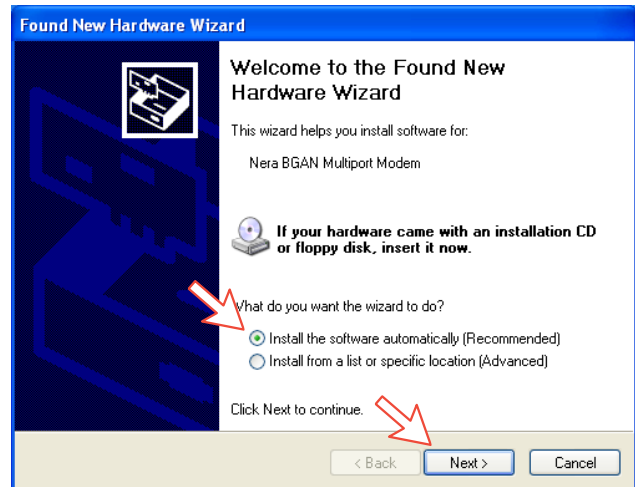
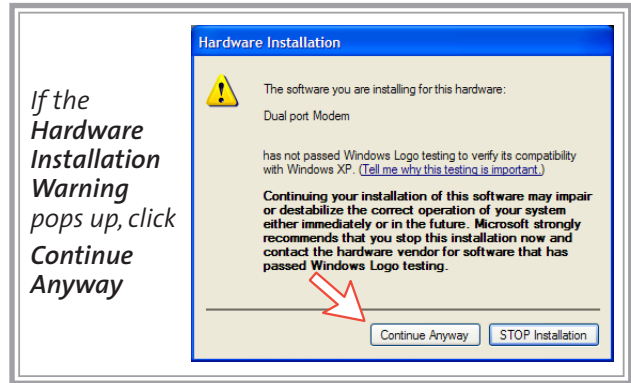
**Software Installation > Installing Nera BGAN USB Drivers**

**3** With the terminal ON, connect the USB cable between the Nera WorldPro 1000/1010 Interface Unit and the PC USB port.

**4** Windows opens the Found New Hardware Wizard.

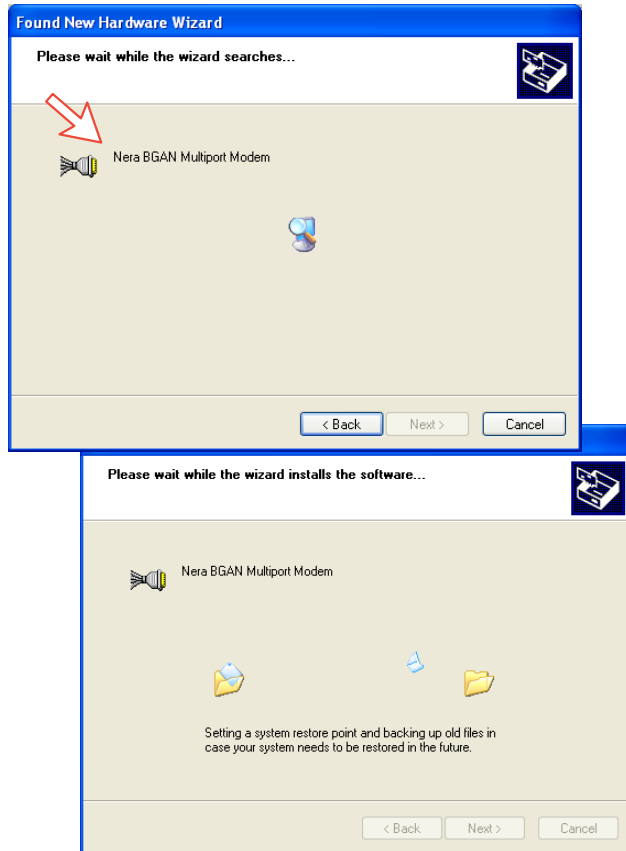
**5** The Found New Hardware Wizard opens when the USB cable has been connected.

Check "Install the software automatically (Recommended)" and click **Next**.

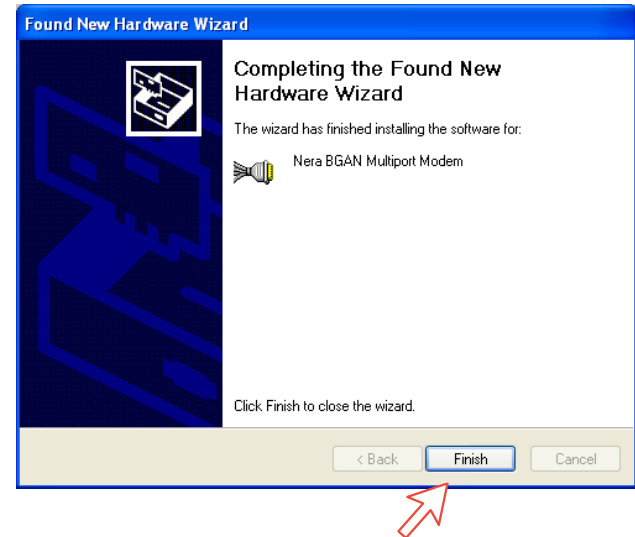




**6** The Found New Hardware Wizard searches for and installs the Nera BGAN Multiport Modem.



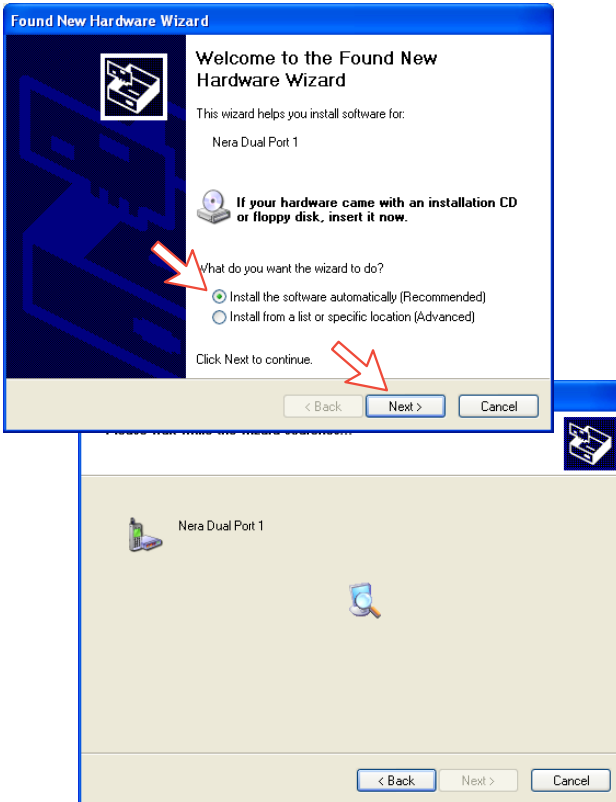
**7** Click *Finish* to complete the installation of the Nera BGAN Multiport Modem. Continue with next step.



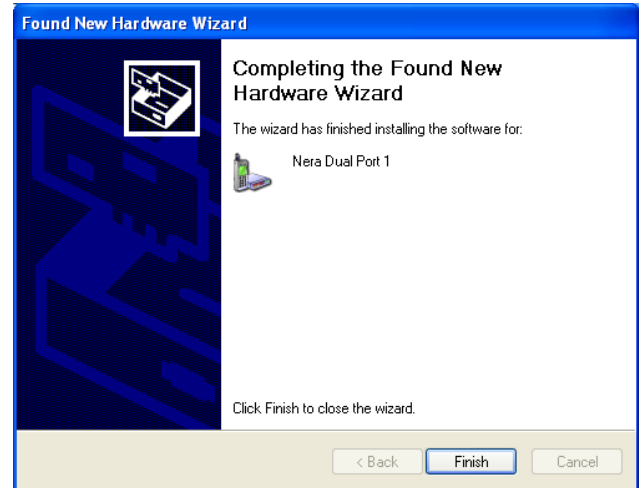


**8** The **Found New Hardware Wizard** reappears prompting to install **Nera Dual Port 1**.

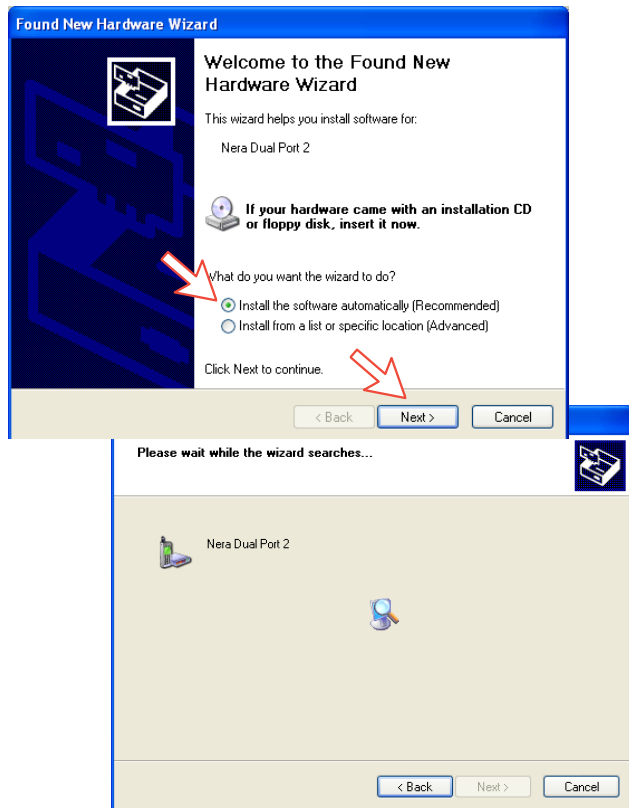
Click **Next** to transfer the driver to the PC.



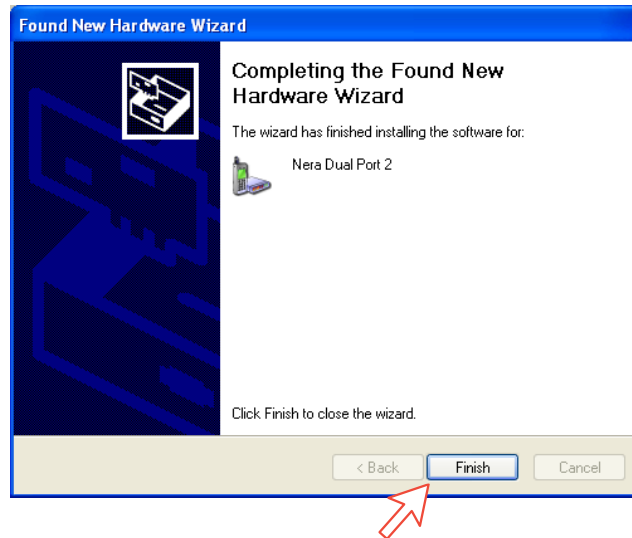
**9** Click **Finish** to complete the installation of the **Nera Dual Port 1**.



**10** The Found New Hardware Wizard reappears prompting to install **Nera Dual Port 2**.  
Click **Next** to transfer the driver to the PC.



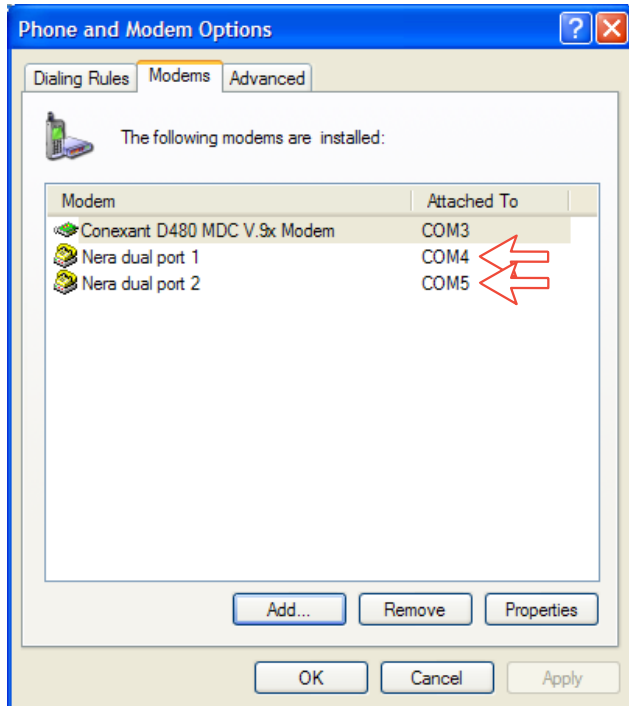
**11** Click **Finish** to complete the installation of the **Nera Dual Port 2**.



*Your new hardware is installed and ready for use*

**12** To verify the installation of drivers:

Double-click **Phone and Modem Options** in the PC **Control panel**. Selecting the **Modems** tab shows the modems installed.



### Explanation

- **Nera dual port 1** (control port) is used for LaunchPad or other applications like HyperTerminal or Nera System Trace.
- **Nera dual port 2** (data port) is used for data connection setup via LaunchPad, or for Dial Up Network (DUN) connection.

See the *Application Guide Setting up a DUN*.



<i>Problems connecting to PC</i>	<i>Probable cause</i>	<i>Action</i>
1. <i>No contact with modem using USB:</i>	Wrong setup of USB driver.	<ul style="list-style-type: none"> <li>• Check cable connection.</li> <li>• Disconnect USB cable, and reconnect</li> <li>• On PC, open Phone and Modem options and check whether USB Modem driver is connected to COM port. If not: <i>Alt. A</i> <ol style="list-style-type: none"> <li>1. Remove Modem in Phone and Modem options. (Nera Dual Port1/Port2)</li> <li>2. Run the Nera USB wizard.</li> <li>3. Reconnect the Nera WorldProterminal</li> <li>4. Follow the New Hardware Wizard in Windows. Click next, and repeat procedure 3 times: Nera Dual Port/Control port 1/2</li> </ol> <i>Alt. B</i> <p>The PC does not recognize the Nera WorldPro. Update the Nera USB drivers. Drivers can be updated via Control Panel &gt; System &gt; Hardware &gt; Device Manager. Typically, a driver is not recognized by computer marked in device manager as a question mark.</p> <i>Alt. C</i> <ol style="list-style-type: none"> <li>1. Remove previous USB installations via Control Panel&gt;System&gt;Hardware&gt;Device Manager. Double-click universal serial Bus Controller and uninstall the USB universal Host Controller. Warning! Removes all USB drivers.</li> <li>2. Repeat installation of USB driver</li> </ol> </li> </ul>



<i>Problems connecting to PC</i>	<i>Probable cause</i>	<i>Action</i>
2. <i>Cannot find Network Connection:</i>	Network connection not installed.	<ul style="list-style-type: none"> <li>• Contact your PC vendor to get the software.</li> </ul>
3. <i>Length of cables:</i> <i>USB</i> <i>Ethernet</i> <i>Bluetooth</i>	Guranteed length: 3m 100m 20m	Note: 8-wire screened cable Free line of sight outdoor
4. <i>Using LaunchPad fails</i>		<ul style="list-style-type: none"> <li>• "Help" BGAN LaunchPad to connect.</li> <li>• Select correct COM port manually</li> <li>• See problem 1 for USB problems.</li> <li>• Reinstall BGAN LaunchPad.</li> <li>• Check that the SIM card is inserted in terminal.</li> <li>• Update BGAN LaunchPad</li> </ul>
5. <i>How do I set a DUN not using BGAN LaunchPad</i>		<ul style="list-style-type: none"> <li>• Read the application guide Setting up a DUN.</li> </ul>