



Nera WorldPro 1000/1010

Connecting to PC via Bluetooth

INTRODUCTION	3
CONNECTING UP	4
SETTING UP BLUETOOTH	5
<i>Enabling Bluetooth using BGAN LaunchPad</i>	<i>5</i>
<i>Enabling Bluetooth with AT commands using HyperTerminal.....</i>	<i>5</i>
<i>Enabling Bluetooth using Nera WorldSet</i>	<i>5</i>
<i>Indication on Nera WorldPro.....</i>	<i>5</i>
<i>Verifying the Bluetooth connection</i>	<i>9</i>
TROUBLESHOOTING	10



Nera WorldPro1000/1010 supports **Packet Switched** data, voice and SMS. Packet switched data can be set up using the LaunchPad PC program or setting up a DUN.

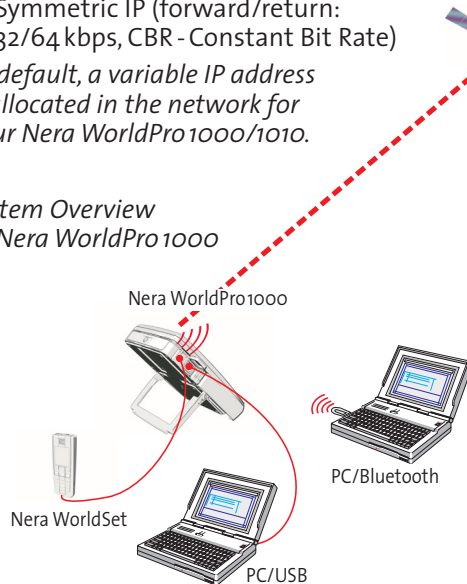
The **Packet Switched service** complies with the communication protocol defined by the Inmarsat BGAN system.

Packet Switched data rates:

- Standard IP bit rates up to 384/240 kbps on shared channels (384 downstream/240 upstream, VBR - Variable Bit Rate)
- Symmetric IP (forward/return: 32/64 kbps, CBR - Constant Bit Rate)

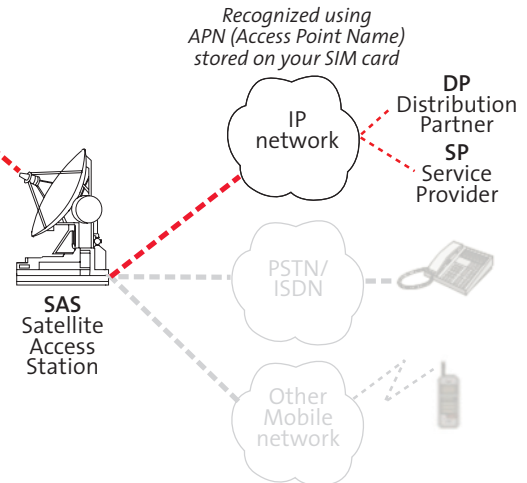
As default, a variable IP address is allocated in the network for your Nera WorldPro1000/1010.

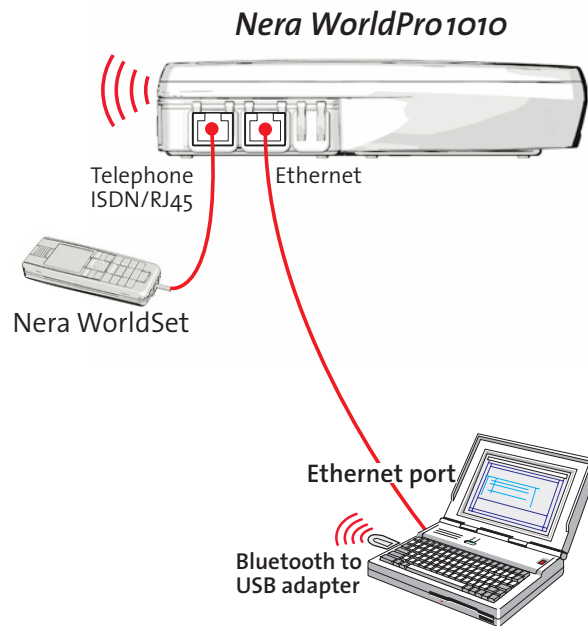
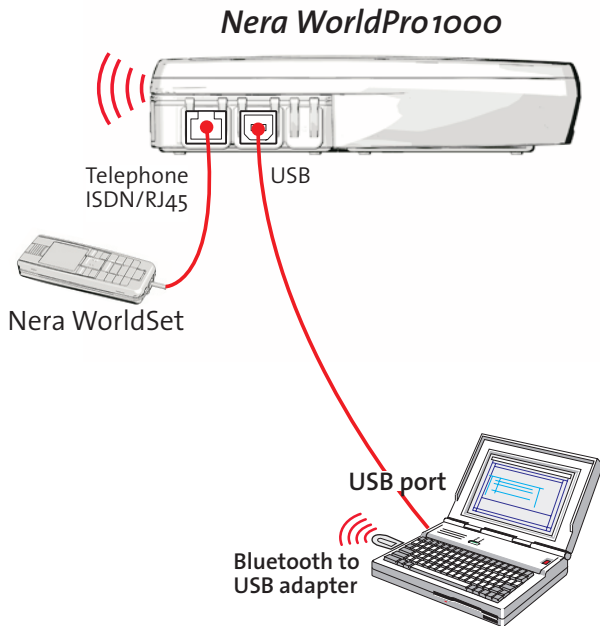
System Overview w/Nera WorldPro1000



Typical IP services supported include:

- E-mail and messaging (including GPRS/UMTS based SMS)
- Data file transfer
- Video Conferencing
- Internet access (including web browsing)
- Intranet access (VPN)
- IP telephony (including conferencing and messaging)
- IP Facsimile
- IP Multi-casting/broadcasting;
- Internet streaming (audio/video)
- Paging
- IP-Crypto
- VoIP





Enabling Bluetooth on Nera WorldPro 1000:

Use Nera WorldSet, or BGAN LaunchPad.

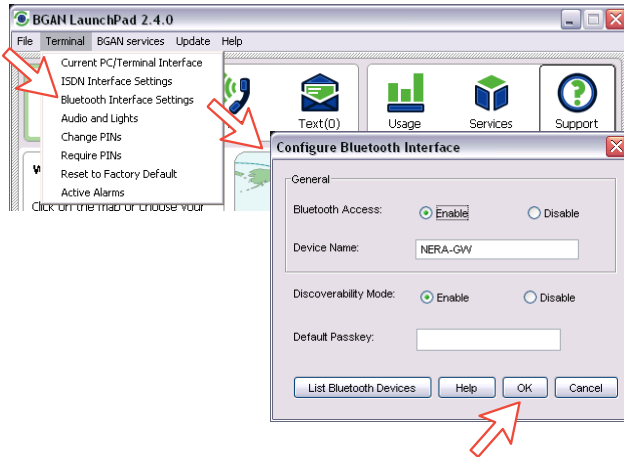
(BGAN LaunchPad requires that a USB connection is established with the Nera WorldPro, see the Application Guide **Nera WorldPro 1000/1010 - Connecting to PC via USB.**)

Enabling Bluetooth on Nera WorldPro 1010:

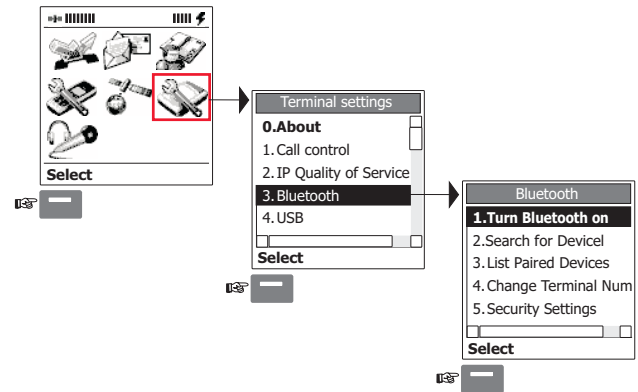
Enabling Bluetooth can be done using Nera WorldSet, or using BGAN LaunchPad.

(BGAN LaunchPad requires that an Ethernet connection is established with the Nera WorldPro, see the Application Guide **Nera WorldPro 1010 - Connecting to PC via Ethernet.**)

Enabling Bluetooth using BGAN LaunchPad (Rev 2.4.0 and above)



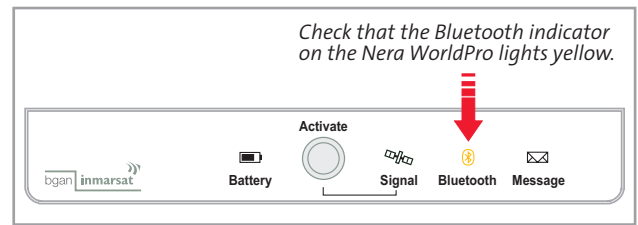
Enabling Bluetooth using Nera WorldSet



Enabling Bluetooth with AT commands using HyperTerminal

```
AT command: AT+WNERADEVINT="BT",n
n=1 Bluetooth ON
n=0 Bluetooth OFF
```

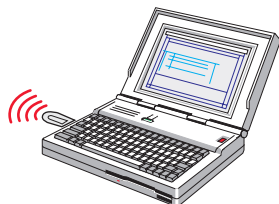
Indication on Nera WorldPro



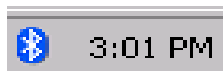


Adding a Bluetooth Device on PC

1 Plug the Bluetooth USB Dongle* into the USB port on the PC. The **Found new hardware** wizard appears and installs the standard Microsoft Native Bluetooth driver automatically.



*A Bluetooth adapter approved by Nera SatCom AS is recommended, e.g. CNet Bluetooth USB Dongle. Do not install the software enclosed with the dongle. Check that the Bluetooth icon appears on the PC taskbar. Rightclick the icon and select **Add a Bluetooth device**.

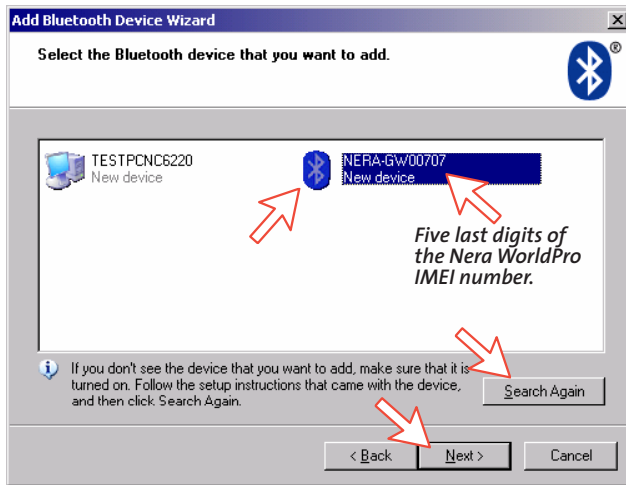


2 Windows opens the **Add Bluetooth Device** wizard. Check **My device is set up and ready to be found**. Click **Next**.



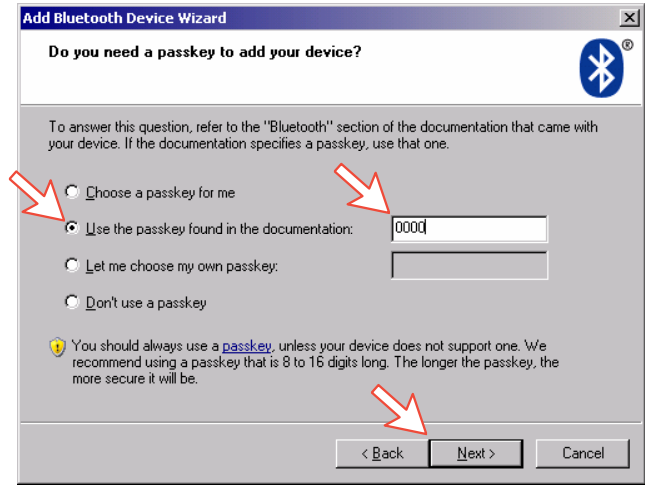
3 Nera WorldPro, represented by device name **NERA_GW** and a reference number, appears in the **Select the Bluetooth device that you want to add window**, see below.

If not appearing, click **Search Again**.
Click **Next**, see next page.



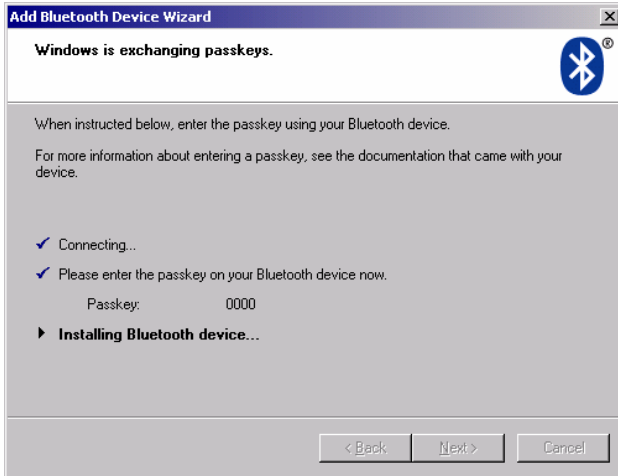
4 Check **Use the passkey found in the documentation**, and key in the password **0000** (four zeroes).
Click **Next**.

The PC then establishes a Bluetooth connection with Nera WorldPro. See next page.





The **Windows is exchanging passkeys** window opens, initiating the connection of your Bluetooth device.



Finally, click **Finish** to complete adding the Bluetooth device.

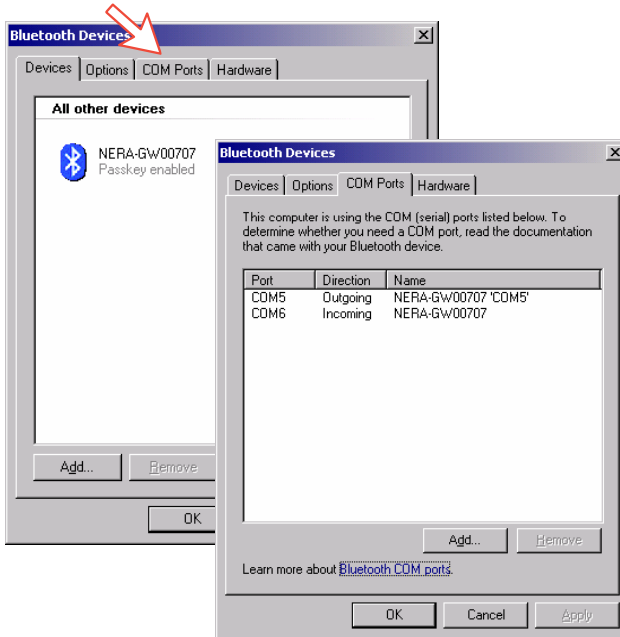


Verifying the Bluetooth connection

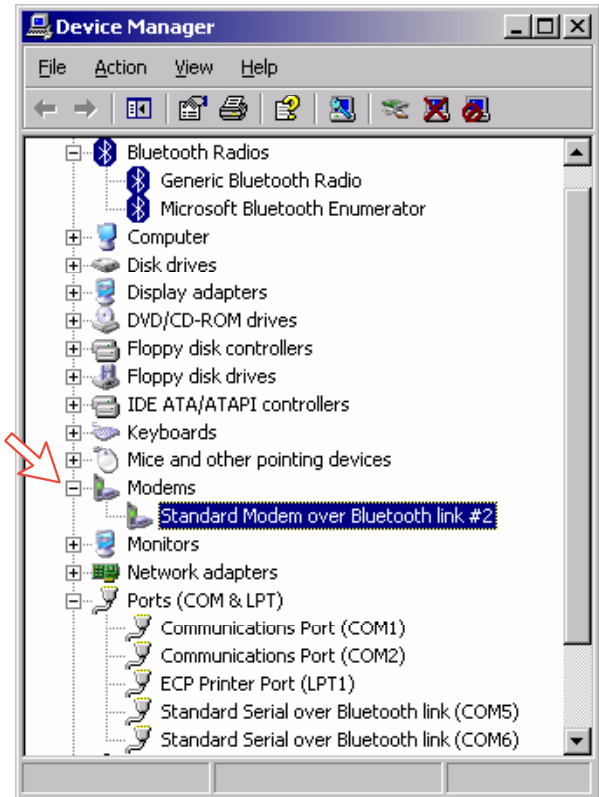
1 Check that Bluetooth has been enabled, see *Control Panel > Bluetooth Devices*.

The **Bluetooth** indicator on the terminal should light yellow.

Clicking **COM Ports** shows that two COM ports have been established. **Outgoing** means that the PC initiates the communication, e.g. at a dial-up call towards internet.



2 Check that a modem connection has been established via Bluetooth, see *Control Panel > System > Hardware > Device Manager*.





<i>Problems connecting to PC</i>	<i>Probable cause</i>	<i>Action</i>
1. <i>Problems installing Bluetooth on Windows:</i>	Wrong setup.	<ul style="list-style-type: none"> • Use Windows XP. • Use Windows Add Bluetooth Device Wizard only. • Follow the instructions in the application guide Connecting to PC via Bluetooth.
	The Bluetooth dongle	<ul style="list-style-type: none"> • Make sure your Bluetooth dongle can be used with Windows. • Use a class 2 / class 1 Bluetooth dongle. • Some Bluetooth dongles may not work towards the Nera WorldPro.
2. <i>Cannot find Network Connection:</i>	Network connection not installed.	<ul style="list-style-type: none"> • Contact your PC vendor to get the software.
3. <i>Length of cables:</i> <i>USB</i> <i>Ethernet</i> <i>Bluetooth</i>	Guranteed length:	
	3m 100m 20m	<ul style="list-style-type: none"> • 8-wire screened cable • Free line of sight outdoor, use class 1 Bluetooth dongle.
4. <i>Using LaunchPad fails</i>		<ul style="list-style-type: none"> • "Help" BGAN LaunchPad to connect. • Select correct COM port manually • Old revision of BGAN LaunchPad • Reinstall BGAN LaunchPad. • Check that the SIM card is inserted in terminal.
5. <i>How do I set a DUN not using BGAN LaunchPad</i>		<ul style="list-style-type: none"> • Read the application guide Setting up a DUN.
6. <i>Connecting to BGAN LaunchPad fails.</i>		<ul style="list-style-type: none"> • Aid the LaunchPad to connect to your Nera WorldPro.