



Nera Dual Port USB

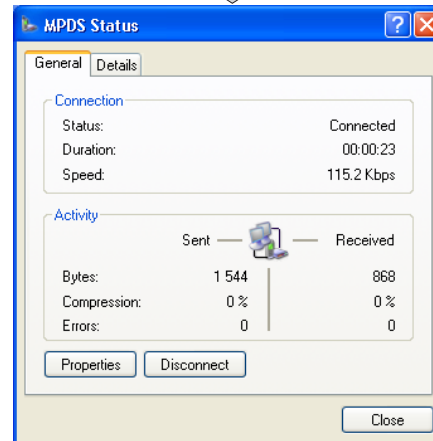
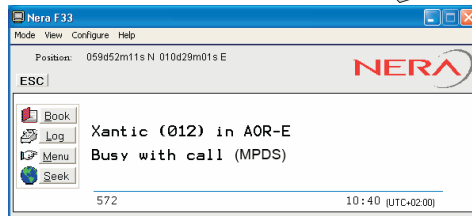
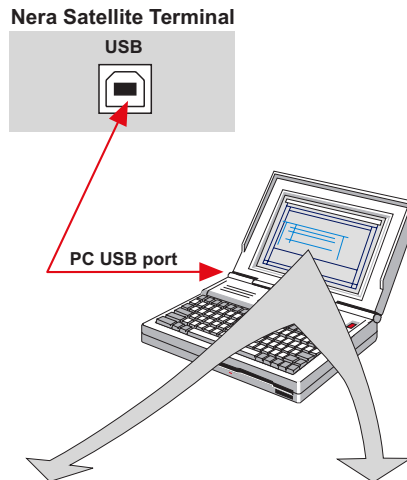
Simultaneous Data Transfer and Operation from vtLite Mobile

(Requires Windows XP)



The Dual port USB allows several programs to operate at the same time via a single USB port:

- one "channel" for data communication
- one "channel" for control using vtLite Mobile

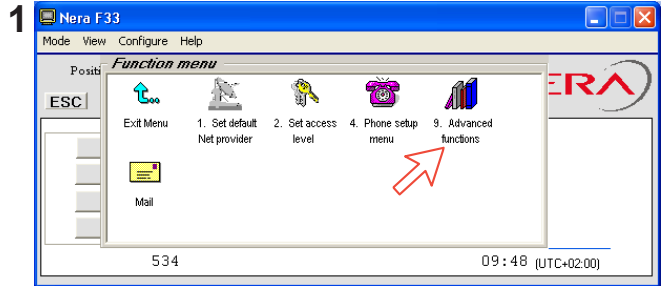




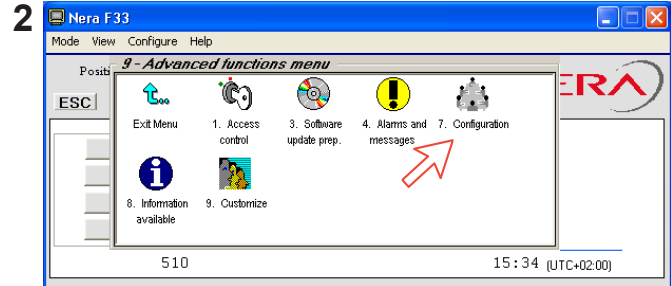
Initialization

- Connect the USB cable between the PC and the Nera Satellite Terminal.
- Turn ON the PC and click **Start>Programs>vtLite Mobile**.

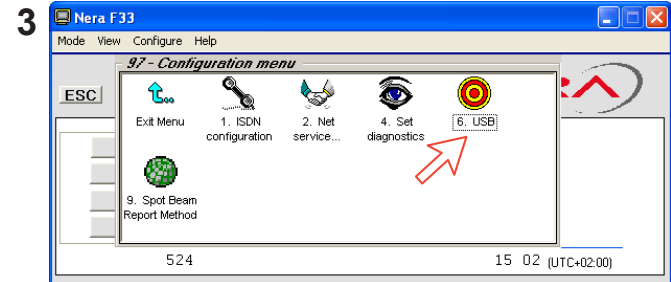
1 In the **Function menu**, double-click the **Advanced functions menu**.



2 Double-click the **Configuration menu**.



3 Double-click the **USB** icon for Dual port setup.



4 The **USB** function opens, showing the current mode selection: **Single Port** (default), using:

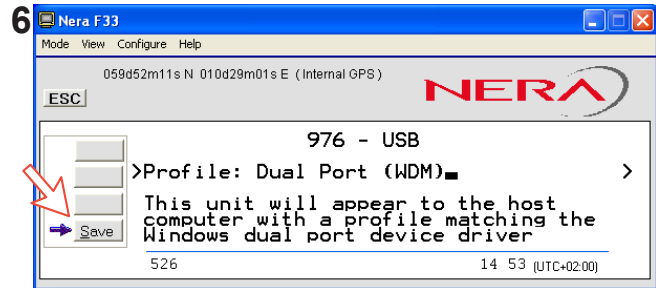
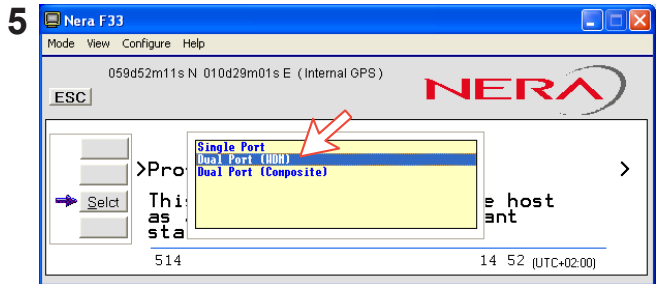
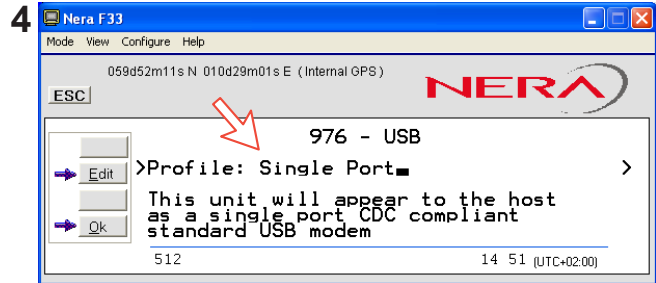
USB4nera.inf

5 Clicking **Edit** allows selection of **Dual Port USB** mode, using:

nera007.inf
nera007.sys
neraport.inf
wdmstub.sys

Dual Port (Composite): Not in use.

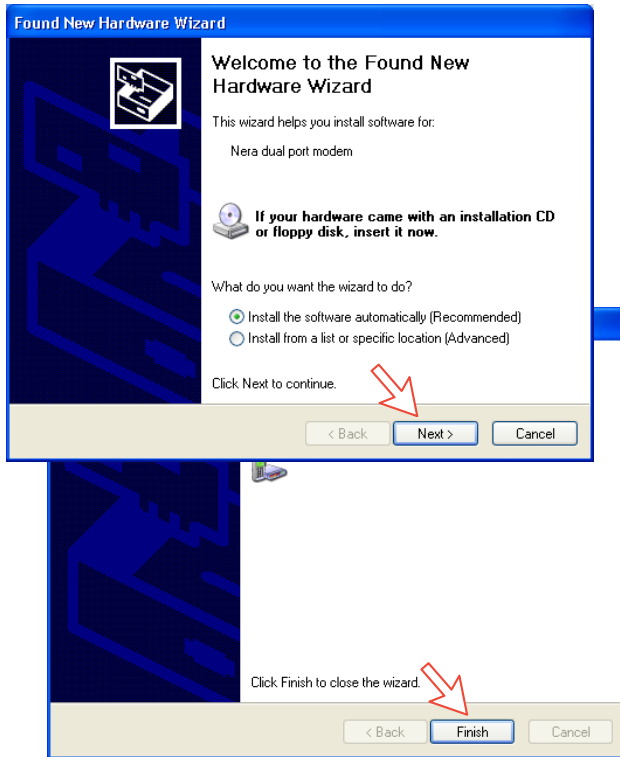
6 Clicking **Save** opens **Welcome to the Found New Hardware Wizard** which allows the selection of new USB drivers required to achieve parallel operation via the USB port.





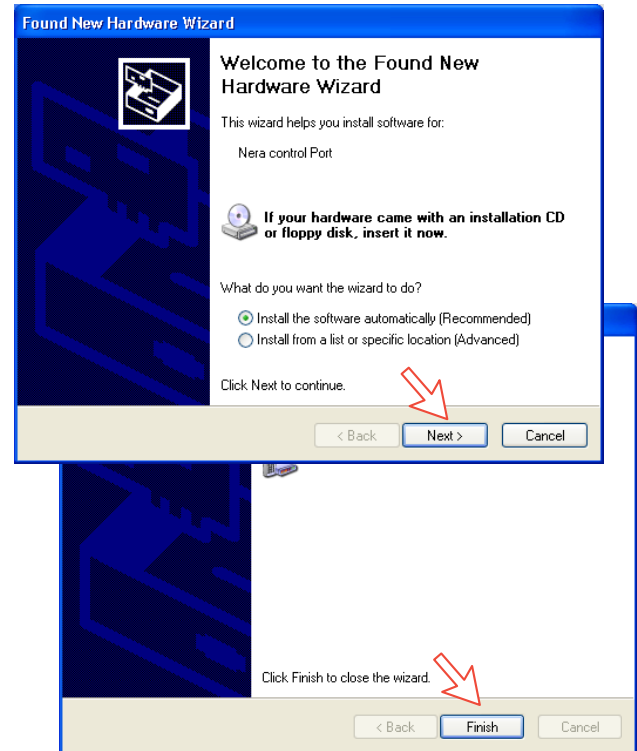
7 The **Welcome to the Found New Hardware Wizard** installs the **Nera dual port modem** driver required for Dual Port operation.

*Click **Next** and then **Finish** to complete the installation*



8 The **Welcome to the Found New Hardware Wizard** now automatically reopens for installation of the **Nera control driver**.

*Click **Next** and then **Finish** to complete the installation*

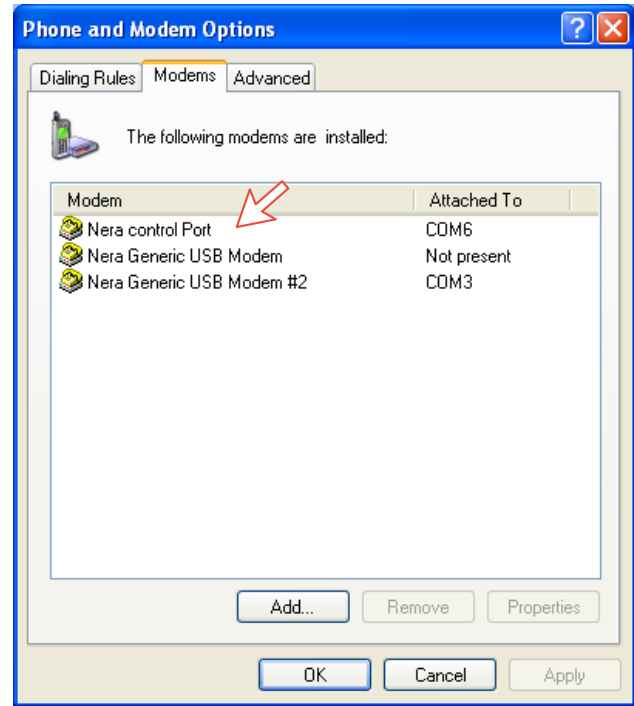
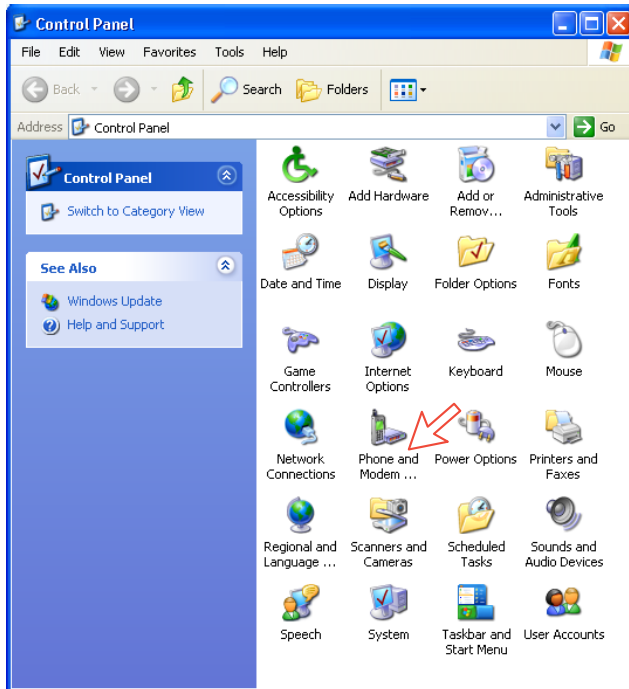


9 Open the **Control Panel** and double-click the **Phone and Modem Options** icon to verify com ports used on the PC.

10 Clicking the **Modem** tab shows the new driver installations (*examples*):

COM6 to be used for vtLite Mobile

COM3 to be used for dial-ups





11 Open **vtLite Mobile** and click **Port**. Selct the **Port COM** setting for the new driver, i.e 6.
*Click **Save Settings**.*

12 Click **Mode>Terminal MMI** to reestablish **vtLite Mobile**. You can now perform data communication at the same time, see the application:
Mobile Packet Data Service via USB, or Mobile Data Service via USB

