



Nera WorldCommunicator

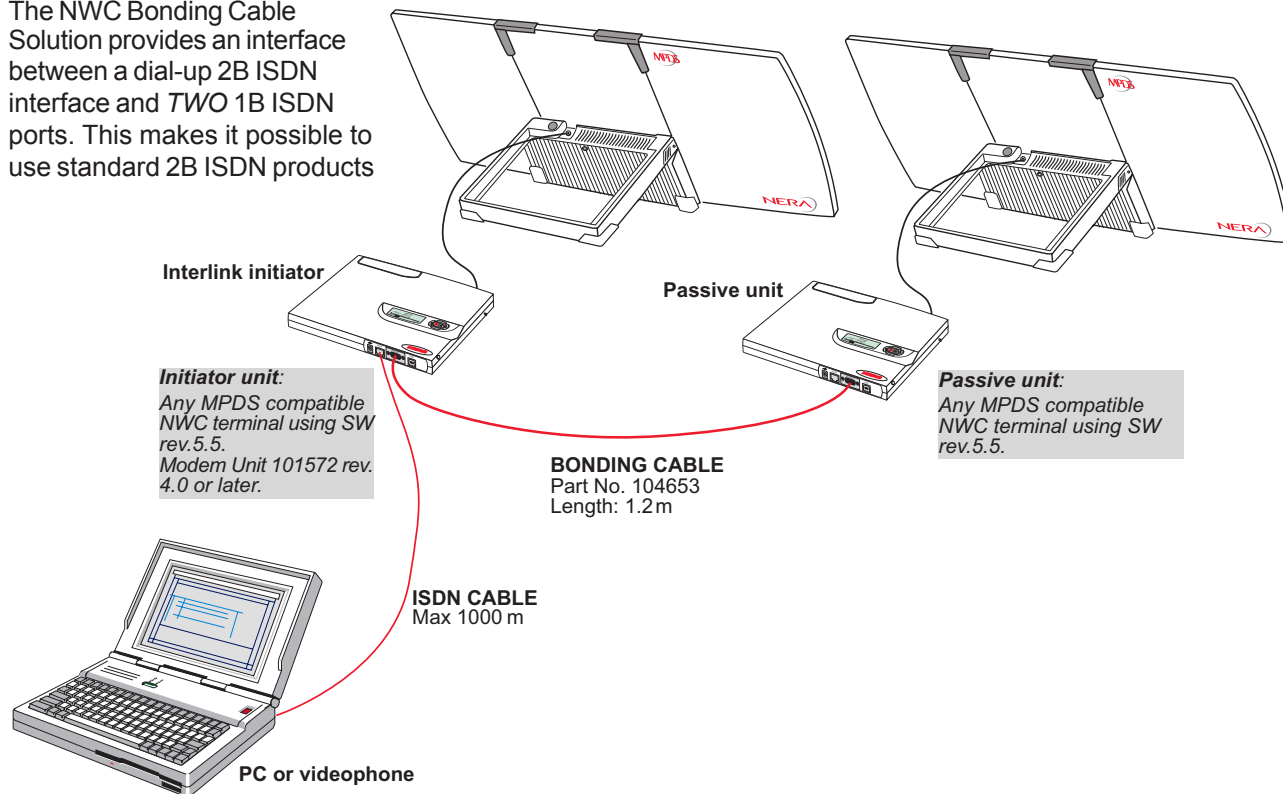
ISDN 128 kbps Bonding Cable Solution



The NWC Bonding Cable Solution allows users to send and receive video quality communications, large file transfer and data connections at rates up to 128 kbps (2 x 64 kbps).

The NWC Bonding Cable Solution provides an interface between a dial-up 2B ISDN interface and *TWO* 1B ISDN ports. This makes it possible to use standard 2B ISDN products

connecting two Inmarsat GAN terminals in parallel. The two Nera WorldCommunicators are connected via a bonding cable without requiring any other external devices or PC cards.





Installation

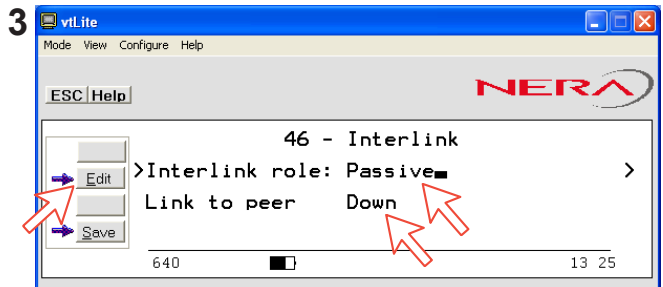
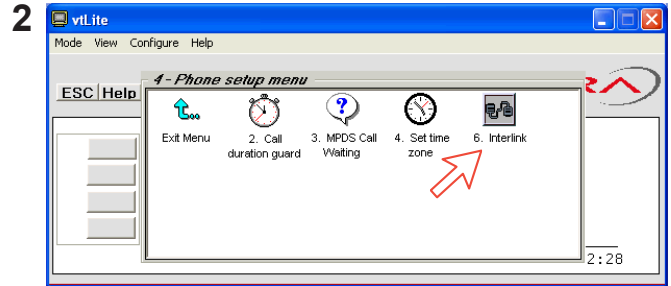
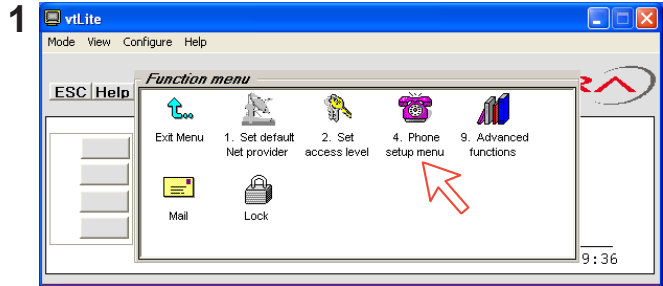
- Connect the **BONDING** cable between the **RS232** connectors of the two NWC Modem Units.
- Connect the **ISDN** cable between the Interlink Initiator NWC and the PC.
- Turn ON the PC and click **Start > Programs > vtLite**.

Configuration from PC/vtLite

1 Open the **Function menu** double-click **Phone setup menu**.

2 Double-click the **Interlink** icon.

3 The **Interlink role** is set to **Passive** as default. Click **Edit** to initiate the Interlink. *See next page.*
The bonding link is not in operation.



4 Clicking **Edit** opens the **Interlink** window which shows that the function is **Passive**.

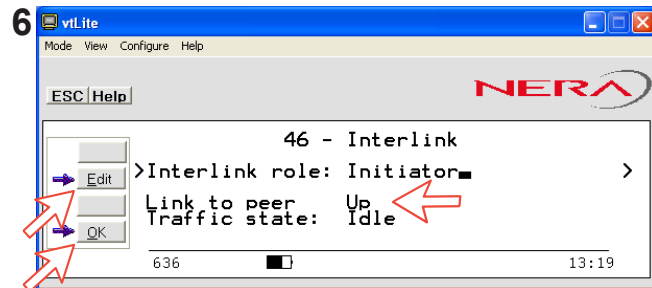
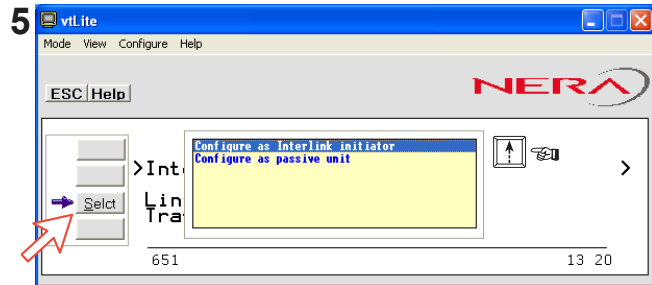
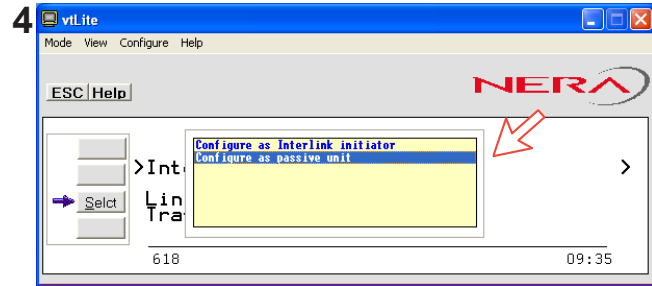
5 Scroll up and click **Select** to configure this NWC Modem Unit as **Interlink initiator**.

6 The **Interlink** window now indicates that this Modem Unit is configured as **Interlink initiator** allowing 128 kbps file transmission.

*The NWC terminal restarts when clicking **OK**.*

The **Interlink** window can be used to monitor the link with the passive unit during operation, and to check whether the sat link is up.

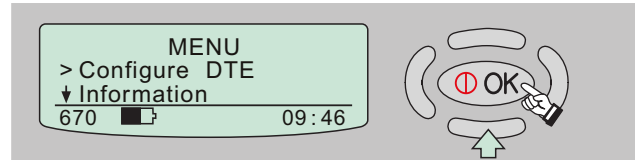
Sat link: when a terminal has a successful satellite connection with the remote end subscriber.



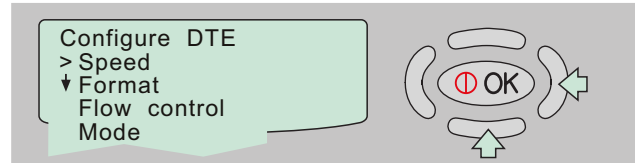


Configuration from Modem Unit

1 Press to enter the **MENU**, and scroll down to **Configure DTE**.

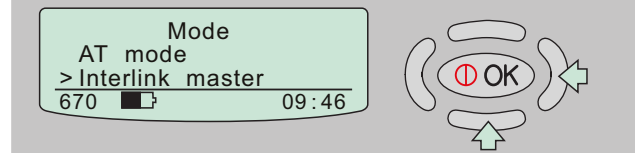


2 Press "right-arrow" to open the **Configure DTE** menu and scroll down to **Mode**.



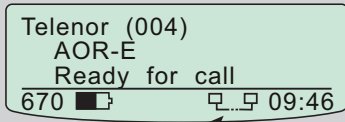
3 Scroll to **Interlink initiator**. Pressing "right-arrow" starts the initiation of the Interlink.

When finished, remember to revert to AT mode for standard DTE operation



Progression of display icons

Interlink initiator



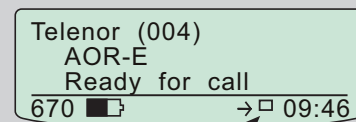
Icons when bonding link is set up

Initiator tries to interlink with Passive unit

Initiator has "sat link" (icon flashes)

Both terminals have "sat link"

Passive unit



Icon when bonding link is set up

→ sat link icon Passive unit is interlinked with Initiator unit

→ sat link icon Passive unit has "sat link"



- 1** Bonding of incoming calls is not possible.
The Interlink Initiator sets up two 64 kbps UDI data connections that have to be bonded in the terrestrial network.
- 2** Only *one* NWC Modem Unit needs to be set up as Interlink Initiator.
- 3** Only the Interlink Initiator Modem Unit needs to have the Hardware Revision 4.0 or later, *see example below.*

4 Software rev 5.5 supports all Nera WorldCommunicator features.
The Modem Unit is set to *normal mode* as default.

5 The bonding cable should be supplied by Nera SatCom only: part no. 104653 (length 1.2 m)

6 When operating as Initiator/Passive unit, vtLite is accessible via the USB port (Windows XP recommended).

7 Standard services are available on each terminal: 4.8 speech / 64 kbps speech / 64 kbps data / 3.1 kHz audio.

MPDS service, however, can not be setup via the ISDN port.

8 If the Hardware Revision is lower than 4.0, the Modem Unit needs to be upgraded at a Nera Approved RSC (Regional Service Centre), or returned to Nera SatCom Norway for modification.

Example of unit labelling:

