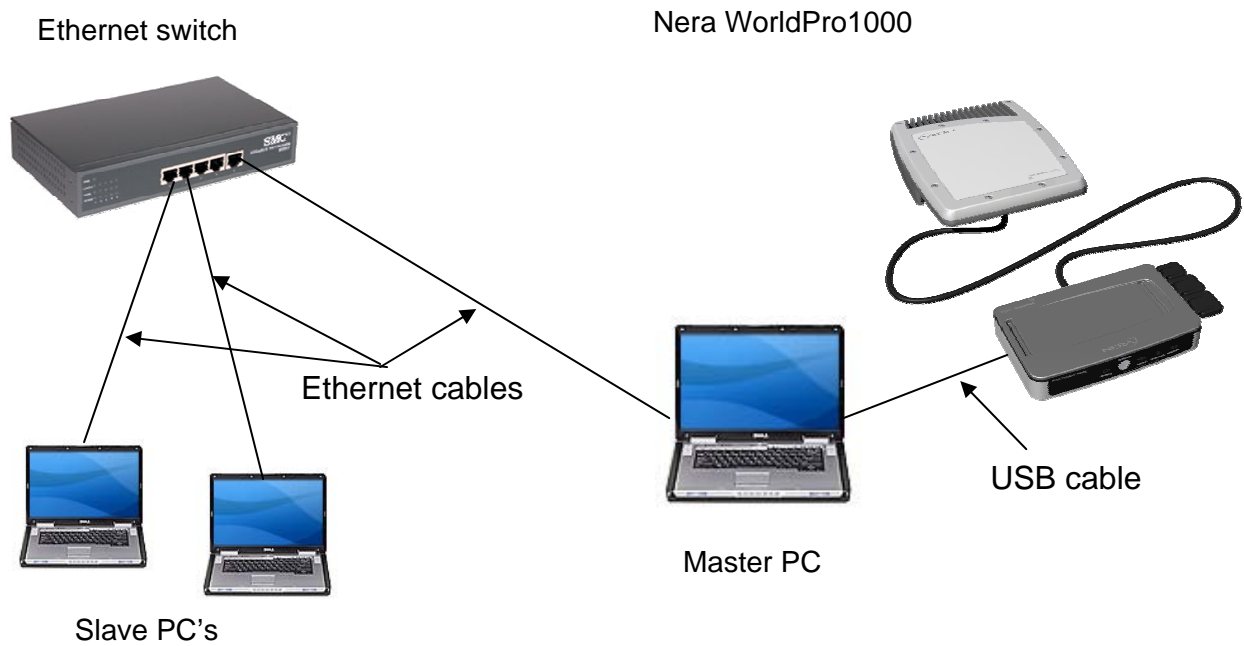


Application Note

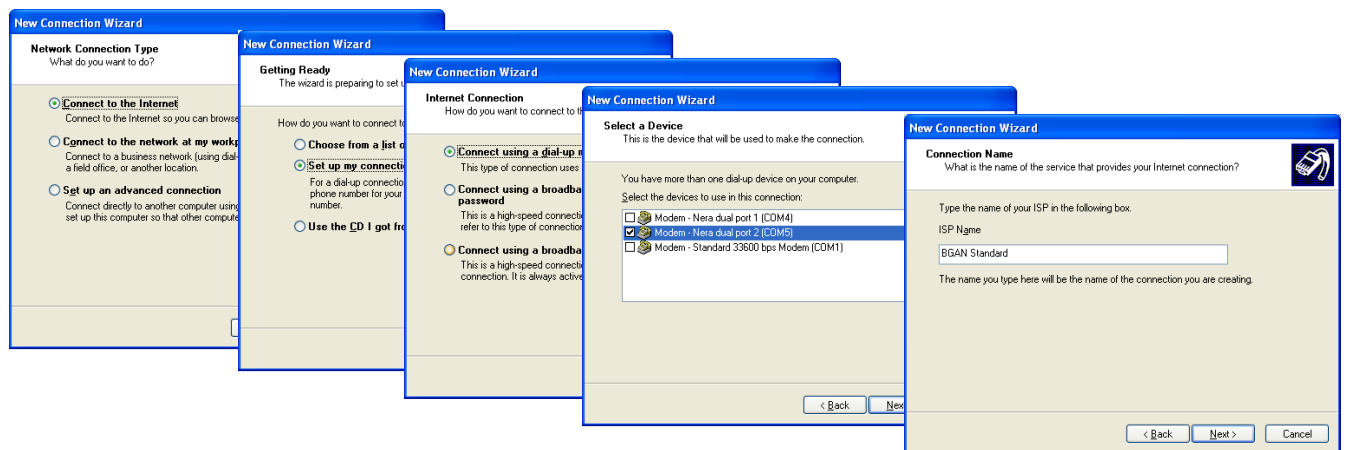


Rev.Date 2005-10-13	Rev. A	Document ID
Prepared by JEE	Approved by OCS	
Application Note Multiple user on Nera WorldPro1000		

For multiple users of Nera WorldPro1000 terminal can easily be managed with a PC and a switch.
 Make connections according to picture below.



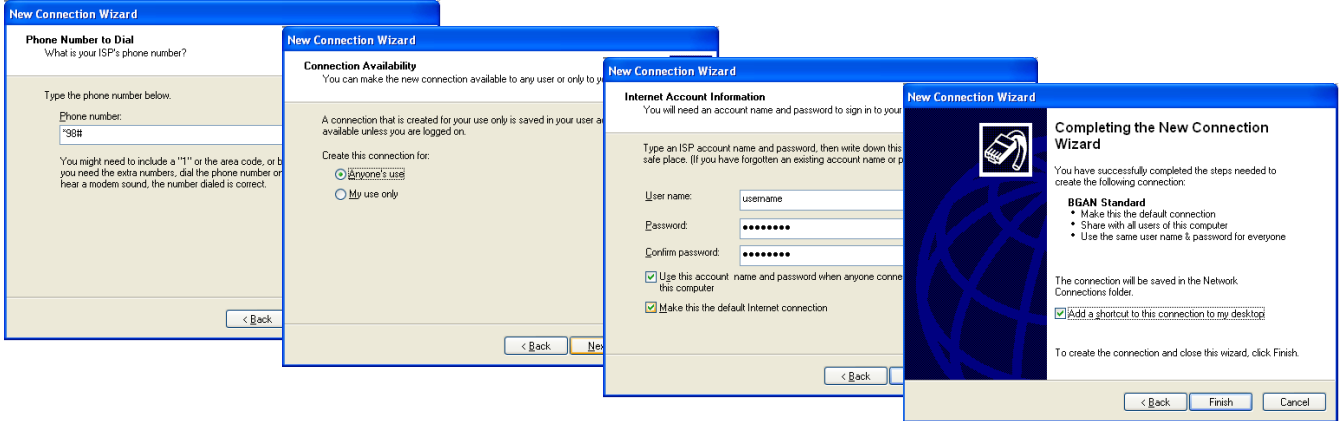
Configure a dial-up connection. Press:



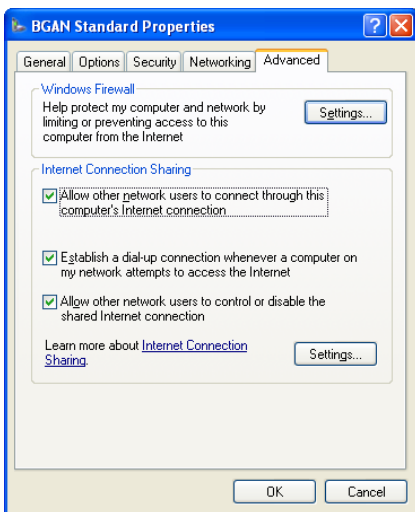
Application Note



Rev.Date 2005-10-13	Rev. A	Document ID
Application Note		



Press properties, then Advanced tab

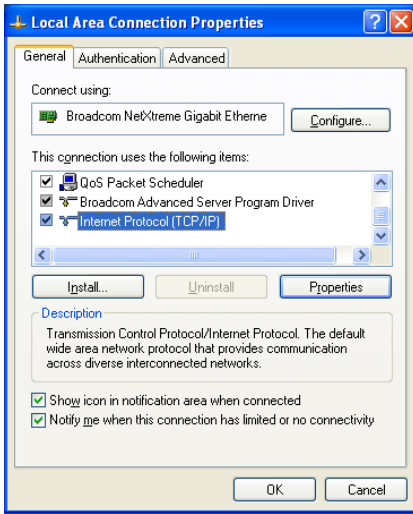


Choose "Allow other network users to connect through this computer's Internet connection"
And press **OK** on the following statement(s)

Application Note

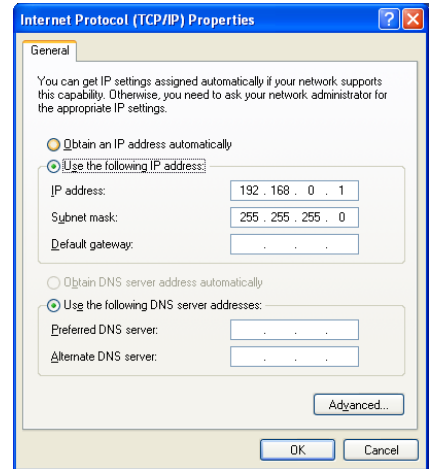


Rev.Date 2005-10-13	Rev. A	Document ID
Application Note		



Check your “Local Area Connection Properties” and “Internet Protocol (TCP/IP) Properties”

Your Master PC will have DHCP and therefore the Slave PC's will automatic be assigned IP-addresses if these have chosen “obtain an IP address automatically”



When dial up your new “Dial-Up connection” your username and password will be verified, your computer will be registered.

If you initiate an internet connection on one of the Slave PC's the call will automatically be dialled up at the Master PC

You can specify “Idle time before hanging up” for your modem. The internet connection will automatically be disconnected after “no activity” period

