

ISDN via satellite

How to connect a TANDBERG VISION system to the Nera WorldCommunicator

TANDBERG

D12006 Rev 02



This document is not to be reproduced in whole or in
part without the permission in writing from:
TANDBERG TELECOM AS

Basic Setup:

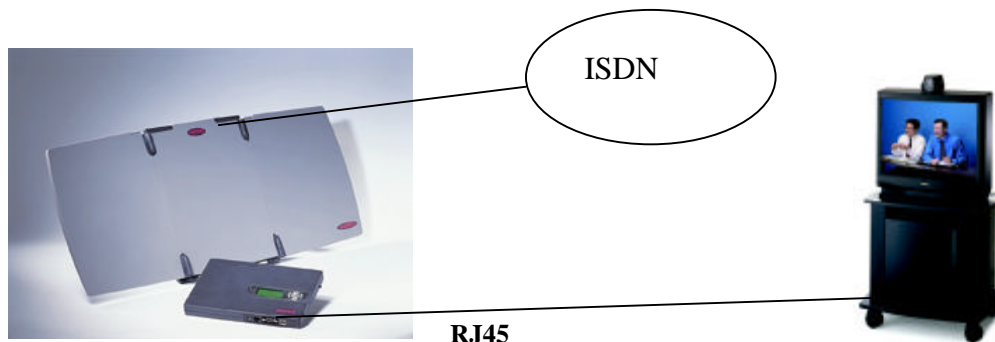


Figure 1: Tandberg Vision system connected to the Nera WorldCommunicator.

All TANDBERG Vision systems will connect to the Nera WorldCommunicator via a standard RJ45 connector. The Nera WorldCommunicator provides a TANDBERG Vision system with both Voice and Data service over the global ISDN network using Inmarsat's network of geosynchronous satellites. The unit is portable and provides a single B channel over ISDN.

The WorldCommunicator should be set up as per its standard factory settings (see figure 2). To initiate an ISDN 1B channel video call via the Inmarsat network you have to dial a prefix, followed by the ISDN number you wish to reach. The prefix is set by factory to 902. IN this case the resulting dial string would have the format: 902 <ISDN number>.

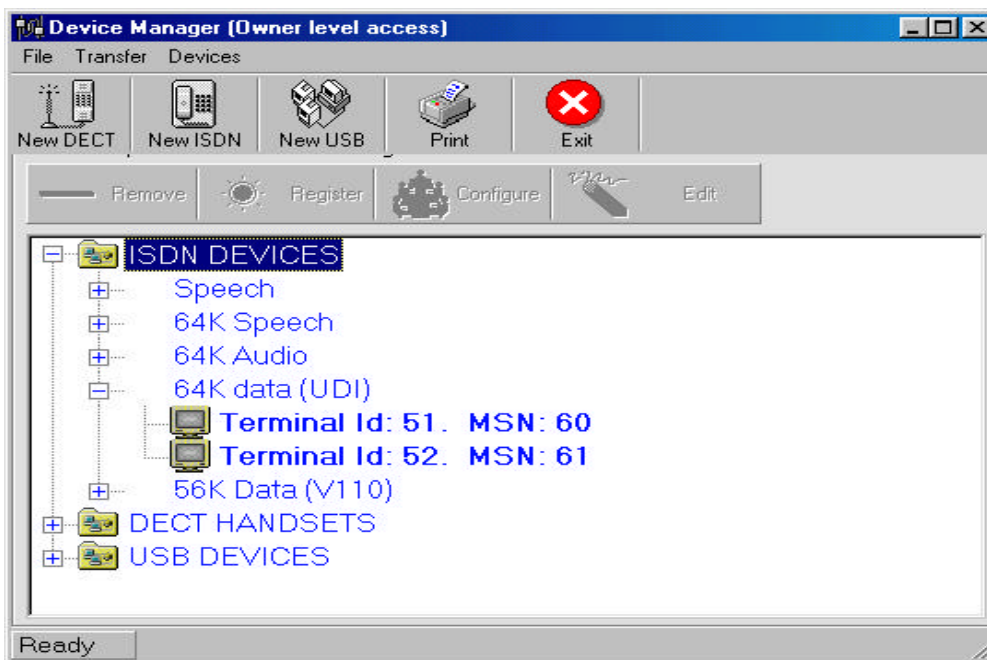


Figure 2: Configuration of the WorldCommunicator

If devices other than a TANDBERG Vision system are to be connected to the WorldCommunicator then the MSN feature should be used. The MSN used could be **60** for example, as shown in figure 2 above. Setting up MSN's ensures that other devices connected to the WorldCommunicator will be not intercept inbound calls intended for the TANDBERG Vision system.

The TANDBERG Vision system connected to the WorldCommunicator should be configured as standard per the factory default settings. The Advanced ISDN Settings menu should be accessed to set up and turn on the MSN feature. The Vision system will then answer only those numbers as entered under **Number 1:** in the **Line Number 1** menu under ISDN Settings. It is important that both the video and audio mode are set to **auto** since the video call will be on 1B channel (64kb/s) only. If these settings are not made it is possible that only audio and no video may be transmitted.

When calling between 2 TANDBERG Vision systems where one unit is connected to a WorldCommunicator, it may be necessary to turn off the **Fall back to telephony** feature in the **Advanced ISDN Settings** menu. The extended call setup time may occasionally cause the TANDBERG unit to revert to telephony mode.

For more information about the Nera WorldCommunicator contact:

Nera Europe:

Nera SatCom AS
PO Box 91, N-1375
Billingstad
Norway
Tel: +47 67 24 47 00
Fax: +47 67 24 46 21

Nera North America:

Nera Americas Inc.
701 Brickell Avenue, Suite 3280
Miami, FL 33101,
USA
Tel.: +1 305 377 8370
Fax: +1 305 377 8371

Web Site – Nera : www.satcom.nera.no

TANDBERG Europe:

Philip Pedersensvei 22
N-1366 Lysaker
Norway
Tel: +47 67 125 125
Fax: +47 67 125 234

TANDBERG North America:

TANDBERG, Inc.
1860 Michael Faraday Drive
Reston, VA 20190,
USA
Tel: +1 703 709 4281
Fax: +1 703 709 4231

Web Site - TANDBERG : www.tandbergvision.com